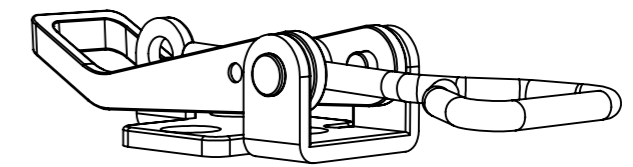
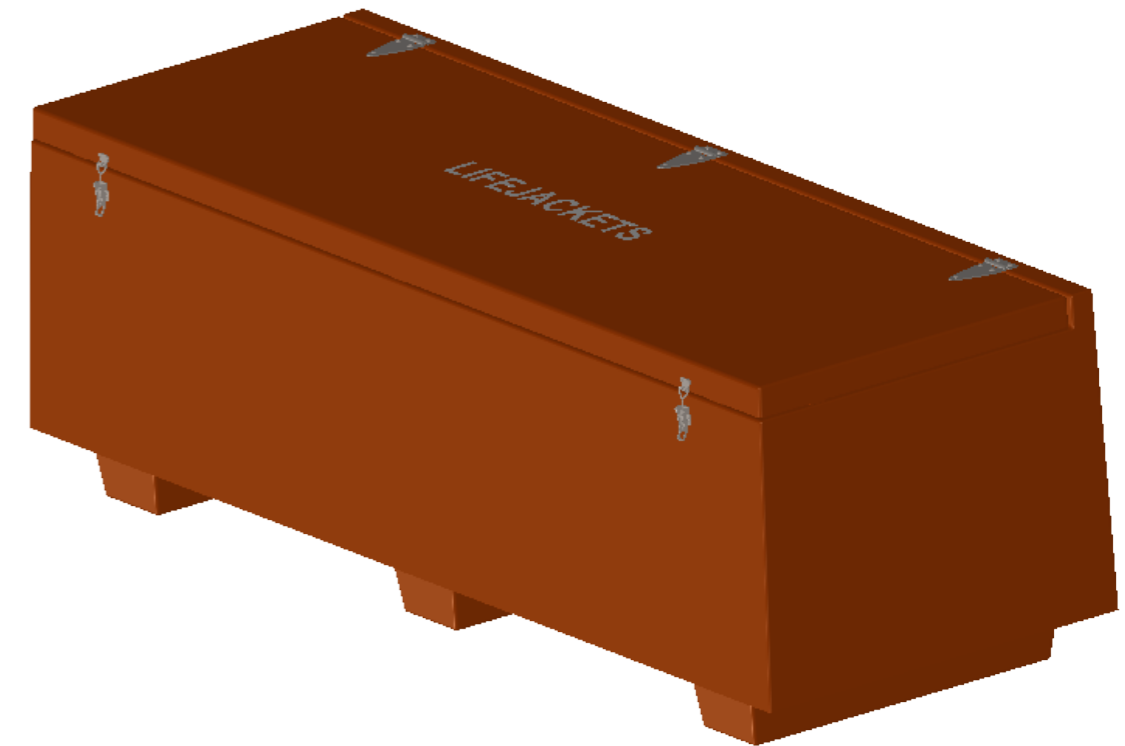



SPECIFICATION	
MATERIAL	3-4MM GRP
FIXING POINTS	150MM ² PADS IN FEET
IP RATING	IP56
SEAL	EPDM
HINGES	P2202 316 STAINLESS STEEL
DOOR CATCH	316 STAINLESS STEEL PROTEX STYLE
COLOUR	ORANGE RAL2009
LETTERING	"LIFEJACKETS"
LETTERING SIZE AND COLOUR	75MM WHITE



316 STAINLESS STEEL PROTEX STYLE CATCH



	NAME	DATE
DRAWN	TW	01/08/2018
CHK'D	XX	01/08/2018
APPV'D	XX	01/08/2018
MFG	XX	01/08/2018
Q.A	XX	01/08/2018

MODEL: JB74	DO NOT SCALE DRAWING	REVISION A
UNLESS OTHERWISE SPECIFIED DIMENSIONS ARE IN MILLIMETERS		TOLERANCE 5% +/-
 Job Bird FACTORY LANE, BASON BRIDGE, HIGHBRIDGE, SOMERSET, TA9 4RN, UK JOBIRD.CO.UK INFO@JOBIRD.CO.UK +44 (0)1278 785546	CABINET DETAILS: 800H x 2385W x 885D DOOR APERTURE: 2293H x 678W INTERNAL DEPTH: 599 WEIGHT: 45KG	
	QUOTE REFERENCE: JRBQXXXXX CUSTOMER: XXXXX	
SCALE 1:15	SHEET 1 of 1	